

# Educational Leadership

April 2009 • Volume 66 • Number 7

## Supporting English Language Learners

### 8 The Demographic Imperative

Eugene E. Garcia, Bryant T. Jensen, and Kent P. Scribner

*Closing the achievement gap for English language learners requires looking closely at who they are.*

### 14 From the Ballot Box to the Classroom

Jill Kerper Mora

*Contradictions flourish when we vote on what makes effective practice. Research is what we need.*

### 20 All Languages Welcomed Here

Orhan Agirdag

*Educators can create a linguistically plural learning environment, even without bilingual instruction.*

### 26 Linking to Prior Learning

Yu Ren Dong

*Strategies for helping students understand challenging academic vocabulary.*

### 32 Best Practices for Adolescent ELLs

Judith Rance-Roney

*Five practices that help schools improve educational achievement for teens.*

### 38 A Narrow Bridge to Academic Reading

Nancy L. Hadaway

*Selecting books focused on one subject or by one author makes reading inviting rather than impenetrable.*

### 42 The Case for Structured English Immersion

Kevin Clark

*Explicit teaching of English during portions of the school day hastens mastery of the language.*

### 48 Undocumented— with College Dreams

Mary Jewell

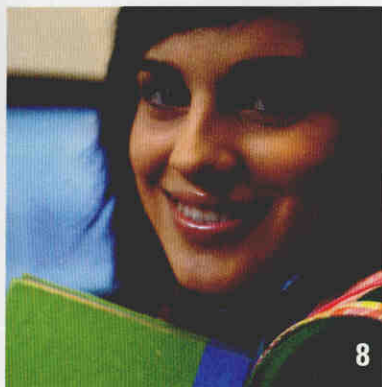
*What happens when an undocumented student decides to go to college?*

### 54 Let's Make Dual Language the Norm

Verónica López Estrada, Leo Gómez, and José Agustín Ruiz-Escalante

*Students become bilingual and biliterate when they enroll in dual language programs.*





8

## 60 Top-Notch Supports for Language Learners

Noah Borrero; Sara Exposito and Maria Del Rosario Barillas; and Merrienne Dyer

*The authors describe a Young Interpreters program, a writing club for girls, and a family outreach program.*

## 66 Winning Schools for ELLs

Delfino Aleman, Joseph F. Johnson Jr., and Lynne Perez

*What do award-winning schools have in common?*

## 70 How to Start Academic Conversations

Jeff Zwiers and Marie Crawford

*Teaching students how to start discussions, build on ideas, and apply ideas to life.*

## 74 There's More to See

Ken Pranksy

*Educators need to look beyond categories to see the communities from which kids come.*

## 79 A Place for All Families

A. Y. "Fred" Ramirez and Ivannia Soto-Hinman

*Practical suggestions for improving parent participation at school*

# Departments

### Perspectives

## 7 In the Neighborhood

Marge Scherer

Listen online at [www.ascd.org/el](http://www.ascd.org/el).

### The Principal Connection

## 83 The Rule of Six

Thomas R. Hoerr

### All About Assessment

## 85 A Process—Not a Test

W. James Popham

Listen online to an interview at [www.ascd.org/el](http://www.ascd.org/el).

### The Learning Leader

## 87 The Value of Culture

Douglas B. Reeves

### What Research Says About...

## 90 Small-Group Intervention for ELLs

Tracy A. Huebner

## 91 Index to Advertisers

### Special Report

## 92 Getting Parents—and a System—On Board

Amy M. Azzam

## 95 ASCD Community in Action

## 96 EL Online

Read more articles on this theme online.



Cover photo © Stefanie Felix



Journal of the Association for Supervision and Curriculum Development

### Journal Staff

**Margaret M. Scherer**  
Editor in Chief

**Deborah Perkins-Gough**  
Senior Editor

**Amy M. Azzam**  
Senior Associate Editor

**Naomi Thiers**  
Associate Editor

**Teresa K. Preston**  
Associate Editor

**Lucy Robertson**  
Assistant Editor

**Judi Connelly**  
Senior Graphic Designer

**Mike Kalyan**  
Production Manager

**Katy Wogec**  
Rights and Permissions Manager

**Brittany A. Bowen**  
Advertising Manager



**Gene R. Carter**  
Executive Director

**Ron Milett**  
Assistant Executive Director for Program Development

**Nancy Modrak**  
Publisher

**Gary Bloom**  
Art Director

**Ronald S. Brandt**  
Executive Editor Emeritus

*Educational Leadership* (ISSN 0013-1784) is a benefit of membership in the Association for Supervision and Curriculum Development. Annual membership dues are \$49, Basic; \$89, Select; \$219, Premium; and \$985, Institutional, of which \$39 per member covers a year's subscription to *Educational Leadership*. *Educational Leadership* is published monthly September through May except bimonthly December/January. Periodical postage paid at Alexandria, Virginia, and at additional mailing offices. Return undeliverable Canadian addresses to: 1415 Janette Ave., Windsor, ON N8X 1Z1. Postmaster: Send address changes to Membership Department, *Educational Leadership*, 1703 N. Beauregard St., Alexandria VA 22311-1714.

*Educational Leadership* is intended primarily for leaders in elementary, middle, and secondary education but is also for anyone interested in curriculum, instruction, supervision, and leadership in schools. ASCD publications present a variety of viewpoints. The views expressed or implied in this publication are not necessarily official positions of the Association. ASCD editorial office and advertising: 703-579-8600; e-mail: [edleadership@ascd.org](mailto:edleadership@ascd.org). *Educational Leadership* is a registered trademark of ASCD. Copyright © 2009 by the Association for Supervision and Curriculum Development. All rights reserved. (USPS 168-760). April 2009. Stock No. 109026.